



# In a Small Town

Some Debts Were Never Meant  
to be Paid

by Jules Devins





# LOGLINE

It's the mid 1970s, Bren, a hardened ex-enforcer returns to his rural Irish hometown from London to bury his estranged son. A chance meeting soon uncovers his death was no accident, forcing Bren to be pulled back into a violent underworld he thought he'd escaped.



# FILM PLOT

When his estranged son is found dead in a lake, Brendan 'The Stitch' McSharry returns from London to his rural Irish hometown. The death is dismissed as a drunken accident, but Brendan senses otherwise. The town is under the quiet control of the violent Sweeney 'Butcher' Brothers, and no one wants him asking questions. As he digs into his son's final hours, old loyalties fracture and Brendan is pulled back into the life he tried to escape — forcing him to choose between walking away or taking revenge.



# DIRECTORS VISION

*This film is grounded in stillness, letting emotion rise in what's left unsaid. Rural Ireland is not just a setting but a memory – harsh, familiar, inescapable. The camera observes quietly, without stylising or judging. Violence, when it comes, is sudden and real. this is a story about men shaped by their past and by the land that refuses to let go.*



# GENRE, TONE & STYLE

- **Genre** – 1970s crime drama / neo-noir
- **Tone** – Slow burn, brooding, emotionally heavy, with underlying menace
- **Style** – Gritty rural realism with restrained dialogue, atmospheric landscapes and sudden bursts of violence.



# MEET THE CHARACTERS

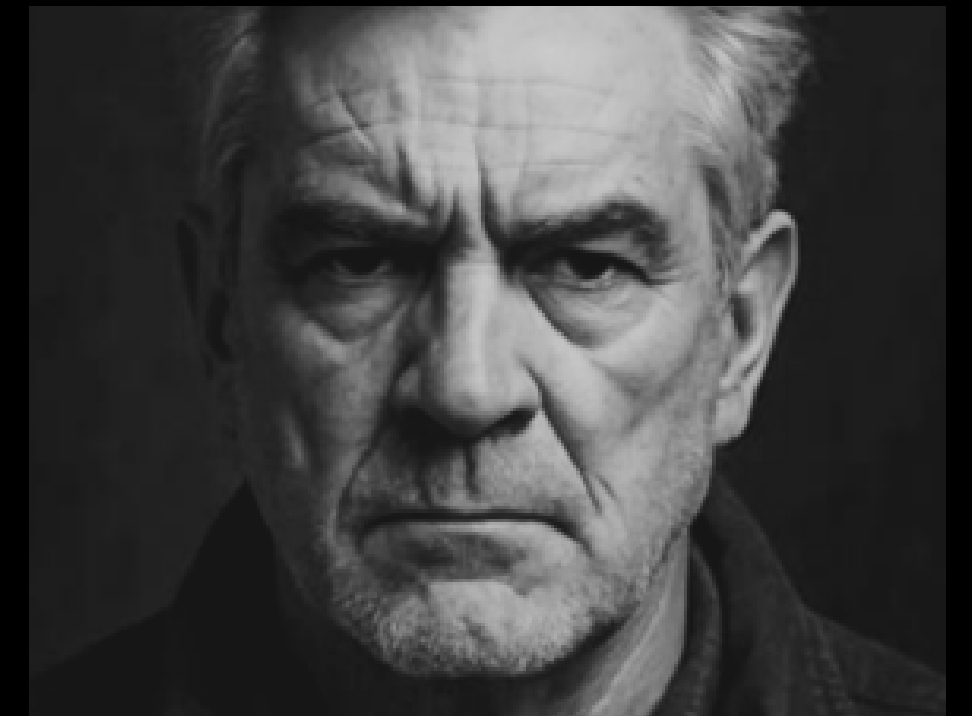


## **Brendan O'Rourke**

Early 50s. A once feared enforcer trying to stay sober and unnoticed. Brendan is a man carrying deep guilt who's forced to confront the violence he thought he left behind.

## **Tommy Ryan**

A hard-bitten fixer who's seen too much and trusts little, caught between old loyalties and the instinct to protect himself.



# MEET THE CHARACTERS



## **Charlie Sweeney**

Late 50s. A cold, calculating brute who runs things by fear, the kind of man who speaks softly because he knows everyone already knows exactly what he's capable of.

## **Michael Sweeney**

Early 50s. A quiet, watchful enforcer, a predator who doesn't need to speak to be threatening, because violence comes naturally to him as breathing.



# MEET THE CHARACTERS



## **Sean Duffy**

Mid 50s. A slick smiling opportunist who plays neighbourly on the surface but runs dirty deals and intimidation from behind his shop counter, always ready to profit from someone else's misfortune... or death.

## **Sheila**

Early 30s. Sharp, self-reliant and worn down by small-town life, a woman who's learned to survive by reading people fast and never giving more of herself than she has to.



# TARGET AUDIENCE

- Age Group: Adults 18 - 65
- Viewers of Calvary, The Guard, Hell or High Water, The Banshees of Inisherin and Mare of Easttown to mention a few...
- Fans of slow-burn character-driven crime dramas with grounded violence and emotional weight escape and nostalgia of the 1970s.



# MARKETING & DISTRIBUTION

- Social Media Campaigns
- Influencer Partnerships
- Fan Engagement
- International Appeal
- Theatrical Release
- Digital Platforms
- Film Festivals





# Thank you

Learn More  
& visit us at:

[www.bulbproductions.com](http://www.bulbproductions.com)

